

- Description:**
- 3-chamber, electrically controlled 4/3- or 4/2-way directional control valve.
  - Direct-activated by solenoids with screwed-in wet pin armature.
  - Standard versions with 24 DC solenoids and NBR seals.
- Operating pressure:**
- 350 bar max.
- Flow rate:**
- Up to 80 l/min.

- Advantages:**
- High flow capacity.
  - Global design.
- Benefits:**
- Minimum downtime.
  - Very short delivery times.

### D1VW series - Spool valve - Electrically operated



67 Parker Direct Link

Part number	Position			Direction
	A	0	B	
D1VW001CNJW	P-B, A-T	All closed	P-A, B-T	4/3 way
D1VW002CNJW	P-B, A-T	P-A-B-T	P-A, B-T	4/3 way
D1VW004CNJW	P-B, A-T	A-B-T	P-A, B-T	4/3 way
D1VW008CNJW	P-A, B-T	P-T	P-B, A-T	4/3 way
D1VW020BNJW	P-B, A-T		P-A, B-T	4/2 way
D1VW020DNJW	P-B, A-T		P-A, B-T	4/2 way detent

1

HYDRAULICS

- |                     |   |
|---------------------|---|
| Description:        | <ul style="list-style-type: none"> <li>• Sandwich valves in combination with directional control valves series D1VW.</li> </ul> |
| Operating pressure: | <ul style="list-style-type: none"> <li>• 350 bar max.</li> </ul>  |
| Advantages:         | <ul style="list-style-type: none"> <li>• Easy to apply.</li> <li>• Can be used in both directions.</li> </ul>                   |
| Benefits:           | <ul style="list-style-type: none"> <li>• Minimum downtime.</li> <li>• Very short delivery times.</li> </ul>                     |

### CM - Check valve - Direct operated



68 Parker Direct Link

Part number	Port
CM2PPV	P
CM2AAV	A
CM2BBV	B
CM2TTV	T
CM2DDV	A + B

### CPOM - Check valve - Hydraulically operated



69 Parker Direct Link

Part number	Port
CPOM2AAV	A
CPOM2BBV	B
CPOM2DDV	A + B

### FM - Throttle check valve



70 Parker Direct Link

Part number	Port	Adjustment
FM2DDSV	A + B	Hexagon screw
FM2DDKV	A + B	Knob

- Description:**
- Inline mounted check, needle, and flow control valves.
  - Flow control available in pressure compensated models.
- Operating pressure:**
- See valve type and size.
- Flow rate:**
- Up to 570 l/min.

- Advantages:**
- Widely approved, reliable design.
- Benefits:**
- Minimum downtime.
  - Very short delivery times.

### C series - Inline mounted check valve



71 Parker Direct Link

Part number	Thread BSPP	Thread NPT	Max. Operating Pressure		Thread size inch
			bar	psi	
9C400S		C400S	350	5075	1/4
9C600S		C600S	350	5075	3/8
9C800S		C800S	350	5075	1/2
9C1200S		C1200S	350	5075	3/4
9C1600S		C1600S	210	3045	1

### F series - Inline mounted throttle check valve



72 Parker Direct Link

Part number	Thread BSPP	Thread NPT	Max. Operating Pressure		Thread size inch
			bar	psi	
9F400S		F400S	350	5075	1/4
9F600S		F600S	350	5075	3/8
9F800S		F800S	350	5075	1/2
9F1200S		F1200S	350	5075	3/4
9F1600S		F1600S	210	3045	1

### N series - Inline mounted needle valve



73 Parker Direct Link

Part number	Thread BSPP	Thread NPT	Max. Operating Pressure		Thread size inch
			bar	psi	
9N400S		N400S	350	5075	1/4
9N600S		N600S	350	5075	3/8
9N800S		N800S	350	5075	1/2
9N1200S		N1200S	350	5075	3/4
9N1600S		N1600S	210	3045	1

**1 MV series - Inline mounted needle valve**



74 Parker Direct Link

Part number		Max. Operating Pressure		Thread size
Thread BSPP	Thread NPT	bar	psi	inch
9MV400S	MV400S	350	5075	1/4
9MV600S	MV600S	350	5075	3/8
9MV800S	MV800S	350	5075	1/2

**Accessories - Mounting kit for series MV**

Part number	Thread size
Thread BSPP	inch
MVK4	1/4
MVK6	3/8
MVK8	1/2
MVK12	3/4
MVK16	1

**PCM series - Inline mounted compensated flow control valve**



75 Parker Direct Link

Part number		Max. Operating Pressure		Thread size
Thread BSPP	Thread NPT	bar	psi	inch
9PCCM400S	PCCM400S	210	3045	1/4
9PCCM600S	PCCM600S	210	3045	3/8
9PCCM800S	PCCM800S	210	3045	1/2
9PCM400S	PCM400S	210	3045	1/4
9PCM600S	PCM600S	210	3045	3/8
9PCM800S	PCM800S	210	3045	1/2

- Description:**
  - Flow Control Valve with nominal pressure rating up to PN 420 bar with BSPP female threads 3/8 BSPP and 1/2 BSPP.
  - Needle Type Valve.
- Recommended fluids:**
  - Mineral based or synthetic with lubricating properties at viscosities of 6 to 420 cSt.
- Temperature range:**
  - From -40°C up to +90°C.
- Applications:**
  - For applications with an inlet pressure up to 420 bar.

- Advantages:**
  - High flow and pressure capability.
- Benefits:**
  - Compact maintenance-free construction, service-proved.
  - Reduce maintenance and system downtime.

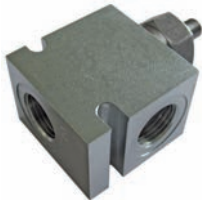
**J02A2 - Flow Control Valve - 3/8 BSPP**



139 Parker DirectLink

Part number	Thread BSPP	Flow l/min
J02A2ZN-6B	3/8	0 - 45

**J04A2 - Flow Control Valve - 1/2 BSPP**



139 Parker DirectLink

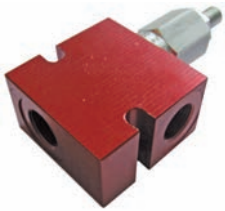
Part number	Thread BSPP	Flow l/min
J04A2ZN-8B	1/2	0 - 110

1

HYDRAULICS

- Description:**
- Flow Control Valve with Reverse Flow Check Valve - with nominal pressure rating up to PN 420 bar with BSPP female threads 3/8 BSPP.
  - Needle Type Valve with Reverse flow Check Valve.
- Recommended fluids:**
- Mineral based or synthetic with lubricating properties at viscosities of 6 to 420 cSt.
- Operating temperature:**
- From -40°C up to +90°C.
- Applications:**
- For applications with an inlet pressure up to 420 bar.
- Advantages:**
- High pressure capability.
  - Reverse free flow check valve.
  - Shuts off to low leakage level.
- Benefits:**
- Compact maintenance-free construction, service-proved.
  - Reduce maintenance and system downtime.

**J02B2 - Flow Control Valve - 3/8 BSPP**

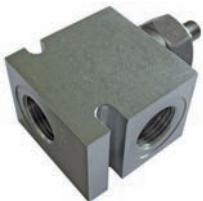


Part number	Thread	Flow l/min
J02B2ZN-6B	3/8 BSPP	0 - 30

139 Parker DirectLink

- Description:**
- Pressure Compensated Flow Control Valve - with nominal pressure rating up to PN 420 bar with BSPP female threads 1/2 BSPP.
  - Restrictive Variable Orifice Style, Pressure Compensated Flow Control Valve.
- Recommended fluids:**
- Mineral based or synthetic with lubricating properties at viscosities of 6 to 420 cSt.
- Temperature range:**
- From -40°C up to +90°C.
- Applications:**
- For applications with an inlet pressure up to 420 bar.
- Advantages:**
- High pressure capability.
  - Pressure compensated.
- Benefits:**
- Compact maintenance-free construction, service-proved.
  - Reduce maintenance and system downtime.

**J04C2 - Flow Control Valve - 1/2 BSPP**



Part number	Thread	Flow l/min
J04C2ZN-8B	1/2 BSPP	0 - 40

139 Parker DirectLink

**KH - 2-Way ball valve steel - E0 24° cone end**



63 Parker  
PowerLine

Part number	Outside Diameter mm
KH06LX	6
KH08LX	8
KH10LX	10
KH12LX	12
KH15LX	15
KH18LX	18
KH22LX	22
KH28LX	28
KH35LX	35
KH42LX	42
KH08SX	8
KH10SX	10
KH12SX	12
KH14SX	14
KH16SX	16
KH20SX	20
KH25SX	25
KH30SX	30
KH38SX	38

**KH - 2-Way ball valve stainless steel - E0 24° cone end**



63 Parker  
PowerLine

Part number	Outside Diameter mm
KH08L71X	8
KH10L71X	10
KH12L71X	12
KH15L71X	15
KH18L71X	18
KH22L71X	22
KH28L71X	28
KH12S71X	12
KH14S71X	14
KH16S71X	16
KH20S71X	20
KH25S71X	25
KH38S71X	38

**1 KH - 2-Way BSPP ball valve steel - Female BSPP (ISO 1179-1)**

HYDRAULICS



63 Parker Direct Link

Part number	Thread BSPP
KH1/8X	1/8
KH1/4X	1/4
KH3/8X	3/8
KH1/2X	1/2
KH3/4X	3/4
KH1X	1
KH11/4X	1 1/4
KH11/2X	1 1/2

**KH - 2-Way BSPP ball valve stainless steel - Female BSPP (ISO 1179-1)**



63 Parker Direct Link

Part number	Thread BSPP
KH1/471X	1/4
KH3/871X	3/8
KH1/271X	1/2
KH3/471X	3/4
KH171X	1
KH11/471X	1 1/4

**KH - 2-Way NPT ball valve steel - Female NPT (SAE 476)**



63 Parker Direct Link

Part number	Thread NPTF
KH1/4NPTX	1/4-18
KH3/8NPTX	3/8-18
KH1/2NPTX	1/2-14
KH3/4NPTX	3/4-14
KH1NPTX	1-11 1/2
KH11/2NPTX	1 1/2-11 1/2

**KH - 3-Way compact BSPP ball valve steel - Female BSPP (ISO 1179-1)**



63 Parker Direct Link

Part number	Thread BSPP
KH3/2-1/4X	1/4
KH3/2-3/8X	3/8
KH3/2-1/2X	1/2
KH3/2-3/4X	3/4
KH3/2-1X	1



**ELA - Air-bleed valve - Male BSPP - EOlastic seal**



63 Parker Direct Link

Part number	Thread BSPP
ELA1/4EDCF	1/4

**WV - Alternating-valve - EO 24° cone end**



63 Parker Direct Link

Part number	Outside Diameter mm	Thread Metric
WV08LOMDCF	8	M14x1.5
WV10LOMDCF	10	M16x1.5
WV12LOMDCF	12	M18x1.5
WV15LOMDCF	15	M22x1.5

**DV - Shut-off valve PN 10 - Casing DIN 3512 - EO 24° cone end**



63 Parker Direct Link

Part number	Outside Diameter mm	Thread Metric
DV06LX	6	M12x1.5
DV08LX	8	M14x1.5
DV10LX	10	M16x1.5
DV12LX	12	M18x1.5
DV15LX	15	M22x1.5
DV18LX	18	M26x1.5
DV22LX	22	M30x2.0
DV28LX	28	M36x2.0
DV35LX	35	M45x2.0

- Description:**
- Non-return valves with nominal pressure ratings up to PN 420 bar:
    - with tube connection both ends RHD
    - with tube connection to male stud RHV/RHZ
    - with female thread both ends RHD
    - valve cartridges RVP
    - valve internal parts I-TL
    - leakage rate hydraulic testing under test pressure: 1 drop per minute.
- Temperature range:**
- From -10°C up to +100°C.
- Alternating valves:**
- For nominal pressure ratings up to PN 160 WV.
  - Leakage rate hydraulic testing under test pressure: 20 drops per minute.
- Hand-operated:**
- For low pressure ratings up to PN 10 bar DV.
- Shut-off valves:**
- For medium pressure ratings up to PN 40 bar LD.
- Applications:**
- Suitable for petroleum-based hydraulic fluid, lubricants and fuel oil.
  - For applications suitable up to 420 bar.

- Advantages:**
- A wide range of sizes, male threads and cracking pressures which make them very flexible.
  - Cr(VI)-free surface.
  - Compact maintenance-free construction, service-proved.

- Benefits:**
- Prolong the life of hydraulic system.
  - Reduce maintenance and downtime costs.

**RHD - Non-return valve - EO 24° cone end**



63 Parker Direct Link

Part number	Outside Diameter mm
RHD06LOMDCF	6
RHD08LOMDCF	8
RHD10LOMDCF	10
RHD12LOMDCF	12
RHD15LOMDCF	15
RHD18LOMDCF	18
RHD22LOMDCF	22
RHD28LOMDCF	28
RHD35LOMDCF	35
RHD42LOMDCF	42
RHD06SOMDCF	6
RHD08SOMDCF	8
RHD10SOMDCF	10
RHD12SOMDCF	12
RHD14SOMDCF	14
RHD16SOMDCF	16
RHD20SOMDCF	20
RHD25SOMDCF	25
RHD30SOMDCF	30
RHD38SOMDCF	38

**RHD1 - Non-return valve - Female BSPP (ISO 1179-1)**



63 Parker Direct Link

Part number	Thread BSPP
RHD11/8CF	1/8
RHD11/4CF	1/4
RHD13/8CF	3/8
RHD11/2CF	1/2
RHD13/4CF	3/4
RHD11CF	1
RHD111/4CF	1 1/4
RHD111/2CF	1 1/2

**RHV-R-ED - Non-return valve - EO 24° cone end - Male BSPP - EOlastic seal (ISO 1179)**



63 Parker Direct Link

Part number	Outside Diameter mm	Thread BSPP
RHV06LREDOMDCF	6	1/8A
RHV08LREDOMDCF	8	1/4A
RHV10LREDOMDCF	10	1/4A
RHV12LREDOMDCF	12	3/8A
RHV15LREDOMDCF	15	1/2A
RHV18LREDOMDCF	18	1/2A
RHV22LREDOMDCF	22	3/4A
RHV28LREDOMDCF	28	1A
RHV42LREDOMDCF	42	1 1/2A
RHV06SREDOMDCF	6	1/4A
RHV08SREDOMDCF	8	1/4A
RHV10SREDOMDCF	10	3/8A
RHV12SREDOMDCF	12	3/8A
RHV14SREDOMDCF	14	1/2A
RHV16SREDOMDCF	16	1/2A
RHV20SREDOMDCF	20	3/4A
RHV25SREDOMDCF	25	1A
RHV30SREDOMDCF	30	1 1/4A
RHV38SREDOMDCF	38	1 1/2A



**1 RHZ-M-ED - Non-return valve - Male metric - EOlastic seal (ISO 9974) - EO 24° cone end**



63 Parker Direct Link

Part number	Outside Diameter mm	Thread Metric
RHZ10LMEDOMDCF	10	M14x1.5
RHZ28LMEDOMDCF	28	M33x2.0
RHZ06SMEDOMDCF	6	M12x1.5
RHZ25SMEDOMDCF	25	M33x2.0

**RHZ-R-ED - Non-return valve - Male BSPP - EOlastic seal (ISO 1179) - EO 24° cone end**



63 Parker Direct Link

Part number	Outside Diameter mm	Thread BSPP
RHZ06LREDOMDCF	6	1/8A
RHZ08LREDOMDCF	8	1/4A
RHZ10LREDOMDCF	10	1/4A
RHZ12LREDOMDCF	12	3/8A
RHZ15LREDOMDCF	15	1/2A
RHZ18LREDOMDCF	18	1/2A
RHZ22LREDOMDCF	22	3/4A
RHZ28LREDOMDCF	28	1A
RHZ35LREDOMDCF	35	1 1/4A
RHZ42LREDOMDCF	42	1 1/2A
RHZ06SREDOMDCF	6	1/4A
RHZ08SREDOMDCF	8	1/4A
RHZ12SREDOMDCF	12	3/8A
RHZ16SREDOMDCF	16	1/2A
RHZ20SREDOMDCF	20	3/4A
RHZ25SREDOMDCF	25	1A
RHZ30SREDOMDCF	30	1 1/4A
RHZ38SREDOMDCF	38	1 1/2A

**RVP - Non-return valve cartridge**



63 Parker Direct Link

Part number	Valve ITL
RVP13CF	6-L/6u.8-S
RVP16CF	8-L/10-S
RVP20CF	10-L/12-S
RVP24CF	12-L/14-S

- Description:
  - Non-return valves with nominal pressure ratings up to PN 420 bar:
    - with BSPP female threads either 3/8 or 1/2 BSPP.
  - Ball type cartridge valves:
    - leakage rate: 3 drops per minute max.
- Recommended fluids:
  - Mineral based or synthetic with lubricating properties at viscosities of 6 to 420 cSt.
- Temperature range:
  - From -40°C up to +90°C (nitrile Seals).
- Opening pressure:
  - 0.2 and 2.1 bar available.
- Applications:
  - For check valve applications with an inlet pressure up to 420 bar.

- Advantages:
  - High pressure rating with low leakage.
  - Good contamination tolerance.
- Benefits:
  - Compact maintenance-free construction, service-proved.
  - Reduce maintenance and system downtime.

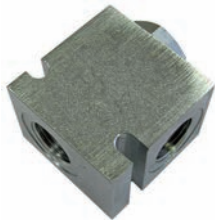
**D02B2 - Non-return valve - 3/8 BSPP**



139 Parker DirectLink

Part number	Thread BSPP	Opening Pressure bar
D02B2-0.2N-6B	3/8	0.2
D02B2-2.1N-6B	3/8	2.1

**D04B2 - Non-return valve - 1/2 BSPP**



139 Parker DirectLink

Part number	Thread BSPP	Opening Pressure bar
D04B2-0.2N-8B	1/2	0.2
D04B2-2.1N-8B	1/2	2.1

1

HYDRAULICS

- Description:**
- Direct Acting Relief Valve with nominal pressure rating up to PN 420 bar with BSPP female threads either 3/8 or 1/2 BSPP.
  - Poppet Type Cartridge Valves - Relieves from nose to side.
- Recommended fluids:**
- Mineral based or synthetic with lubricating properties at viscosities of 6 to 420 cSt.
- Operating pressure:**
- 5 to 420 bar (adjustable).
- Temperature range:**
- From -40°C up to +90°C.
- Applications:**
- Fast response relief valve with an inlet pressure up to 420 bar.
- Advantages:**
- High pressure rating with low leakage and fast response.
  - Good contamination tolerance.
- Benefits:**
- Compact maintenance-free construction, service-proved.
  - Reduce maintenance and system downtime.

**A02B2 - Relief Valve - 3/8 BSPP**



139 Parker DirectLink

Part number	Thread BSPP	Opening Pressure bar
A02B2PZN-6B	3/8	5 - 420

**A04B2 - Non-return valve - 1/2 BSPP**

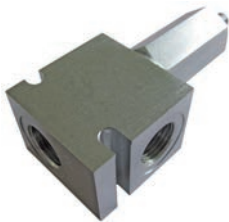


139 Parker DirectLink

Part number	Thread BSPP	Opening Pressure bar
A04B2PZN-8B	1/2	5 - 420

- Description:
  - Direct Acting Relief Valve with nominal pressure rating up to PN 420 bar with BSPP female threads 1/2 BSPP.
  - Spool Type Cartridge Valve - Relieves from nose to side.
- Recommended fluids:
  - Mineral based or synthetic with lubricating properties at viscosities of 6 to 420 cSt.
- Operating pressure:
  - 2 to 100 bar (adjustable).
- Temperature range:
  - From -40°C up to +90°C.
- Applications:
  - For low pressure relief valve applications.
- Advantages:
  - Low pressure operating range with high flow capacity.
- Benefits:
  - Compact maintenance-free construction, service-proved.
  - Reduce maintenance and system downtime.

### A04C2 - Relief Valve - 1/2 BSPP



Part number	Thread BSPP	Opening Pressure bar
A04C2FZN-8B	1/2	2 - 100

139 Parker DirectLink

1

HYDRAULICS

- Description:**
- Direct Acting Poppet Type Relief Valve with nominal pressure rating up to PN 420 bar with BSPP female threads 1/2 BSPP.
  - Poppet Type Cartridge Valve - Side to Nose Relief Direction.
  - Leakage rate: 5 drops per minute max.
- Recommended fluids:**
- Mineral based or synthetic with lubricating properties at viscosities of 6 to 420 cSt.
- Operating pressure:**
- 5 to 350 bar (adjustable).
- Temperature range:**
- From -40°C up to +90°C.
- Applications:**
- For applications with an inlet pressure up to 420 bar.
- Advantages:**
- Flat response with low leakage and high flow capacity.
  - Good contamination tolerance.
- Benefits:**
- Compact maintenance-free construction, service-proved.
  - Reduce maintenance and system downtime.

**A04D2 - Relief Valve - 1/2 BSPP**

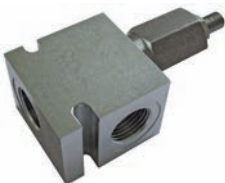


Part number	Thread BSPP	Opening Pressure bar
<b>A04D2MZN-8B</b>	1/2	5 - 350

**139** Parker DirectLink

- Description:**
- Pilot Operated Spool Type Relief Valve with nominal pressure rating up to PN 420 bar with BSPP female threads 1/2 BSPP.
  - Spool Type Cartridge Valve.
  - Leakage rate hydraulic testing under test pressure: 5 drops per minute.
- Recommended fluids:**
- Mineral based or synthetic with lubricating properties at viscosities of 6 to 420 cSt.
- Operating pressure:**
- 10 to 420 bar.
- Temperature range:**
- From -40°C up to +90°C.
- Applications:**
- For applications with an inlet pressure up to 420 bar.
- Advantages:**
- Compact maintenance-free construction, service-proved.
  - Reduce maintenance and downtime costs.
  - High pressure rating.
- Benefits:**
- Compact maintenance-free construction, service-proved.
  - Reduce maintenance and system downtime.

**A04G2 - Relief Valve - 1/2 BSPP**



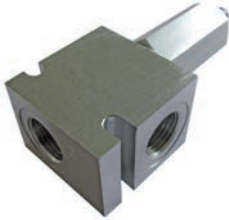
Part number	Thread BSPP	Opening Pressure bar
<b>A04G2PZN-8B</b>	1/2	10 - 420

**139** Parker DirectLink



<b>Description:</b>	<ul style="list-style-type: none"> <li>• Bi Directional (Crossline) Relief Valve with nominal pressure rating up to PN 350 bar with BSPP female threads 1/2 BSPP.</li> <li>• Bi-Directional (Crossline) Poppet Type Cartridge Valve.</li> </ul>
<b>Recommended fluids:</b>	<ul style="list-style-type: none"> <li>• Mineral based or synthetic with lubricating properties at viscosities of 6 to 420 cSt.</li> </ul>
<b>Operating pressure:</b>	<ul style="list-style-type: none"> <li>• 10 to 350 bar.</li> </ul>
<b>Temperature range:</b>	<ul style="list-style-type: none"> <li>• From -40°C up to +90°C.</li> </ul>
<b>Applications:</b>	<ul style="list-style-type: none"> <li>• For applications with an inlet pressure up to 420 bar.</li> </ul>
<b>Advantages:</b>	<ul style="list-style-type: none"> <li>• Compact maintenance-free construction, service-proved.</li> <li>• Reduce maintenance and downtime costs.</li> <li>• High pressure rating.</li> <li>• Relieves in both directions.</li> </ul>
<b>Benefits:</b>	<ul style="list-style-type: none"> <li>• Prolong the life of hydraulic system.</li> <li>• Reduce maintenance and system downtime.</li> <li>• One cartridge valve relieves in both directions, saving space and cost.</li> </ul>

**A04J2 - Relief Valve - 1/2 BSPP**



139 Parker DirectLink

Part number	Thread BSPP	Opening Pressure bar
A04J2MZN-8B	1/2	10 - 350